



3D Merino colour in different tones of blue and purple to create a splattered paint effect.

Metallic blue buttons to coordinate with the sea theme.

Wide leg cool wool trousers

These garments are designed to be interchangeable with each other and coordinate with the sea life theme

Cool wool merino, cut into frayed layers overlapping each other

Crinkle Merino bralette in different tones of metallic pinks and purples.

Drop waist shorts to give a chic but relaxed look.

Invisible zip

3D Merino colour in different tones of blue and purple to create a splattered paint effect.

Blue heels with the a metallic blue buckle to coordinate with the buttons

Plain weave, merino cool wool with a white warp and a blue weft

Plain weave, merino cool wool with a blue warp and weft

Checked patterned merino cool wool, with highlight of red, yellows, blues and greens.

100% 3D Marino colour, died with paint splat effect



Ella Turner,
Lawnswood School

Wool4School 2018:

Creator: Ella Mae Turner

School name: Lawnwood School

Year: 12

Name of the design: Shut Up and Dive

Musician designed for: Rihanna

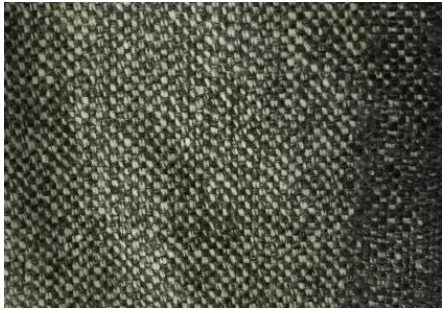
Theme: Under the Sea

Description of Design concept:

For my design concept under the sea, my inspiration came from the colours and fluidity of the under sea life such as blue, turquoises, greens and metallic sheens of fish, seaweed and coral. I chose to design my outfit for Rihanna as her choice in fashion is very unique compared to every day outfits and has relevance to fashion catwalks as well as street style. Also her fashion influence relies on her large public following. I wanted to create an outfit that could be interchangeable with each other and could be worn on stage whilst she performs as well as being worn on a catwalk and at red carpet events. The fabrics I chose to use are all woven merino wool. The main fabric for the fringe jacket and wide leg trousers is 'Cool wool' because it is breathable, has odour resistance, fire resistance and most importantly has a timeless elegance to it. The bralette top will be produced from 'Crinkle Merino' which has a an impregnated agent applied to it to make the creases permanent. The paint splattered effect on the shorts and blazer would be created using '3d Merino Colour' which can be applied to specific areas of any garment to add an accent of colour, whilst being durable and easy to clean. My accessory is a pair of high heels with co-ordinated fabric such as the blue metallic buckle, which matches the buttons on both garments.

The **Wool mark logo** is one of the world's most recognisable textile symbols, and it indicates that a product bearing the mark is made from 100 per cent Pure New Wool.





Plain weave, merino 'Cool Wool' with a white warp and a blue weft.



Checked patterned merino 'Cool Wool', with highlight of red, yellows, blues and greens.



Plain weave, merino 'Cool Wool' with a blue warp and weft.

Fitted sleeve to add shape to the arms

